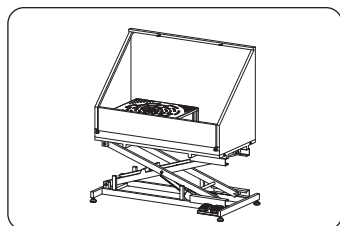
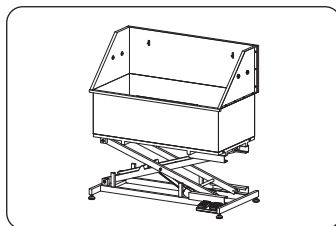


AEOLUS

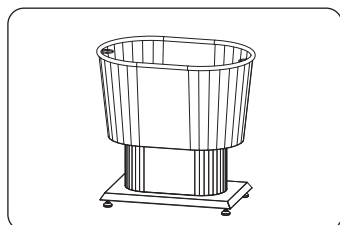
Professional Grooming Products Supplier



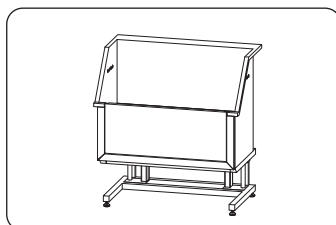
BTS-132TE



BTS-136E



BTS-161



BTS-139E

Distributor Contacts



Producer: Shanghai TOEX International Trading Co., Ltd.
Address: Room 403, Building 3, No. 288, Qianfan Road,
Songjiang District, Shanghai, China.

Manufacturer: Shanghai Xunyuan Industrial Co., Ltd.
Address: Lane 29, No.1509 East Qianming Road,
Fengjing Town, Jinshan District, Shanghai.

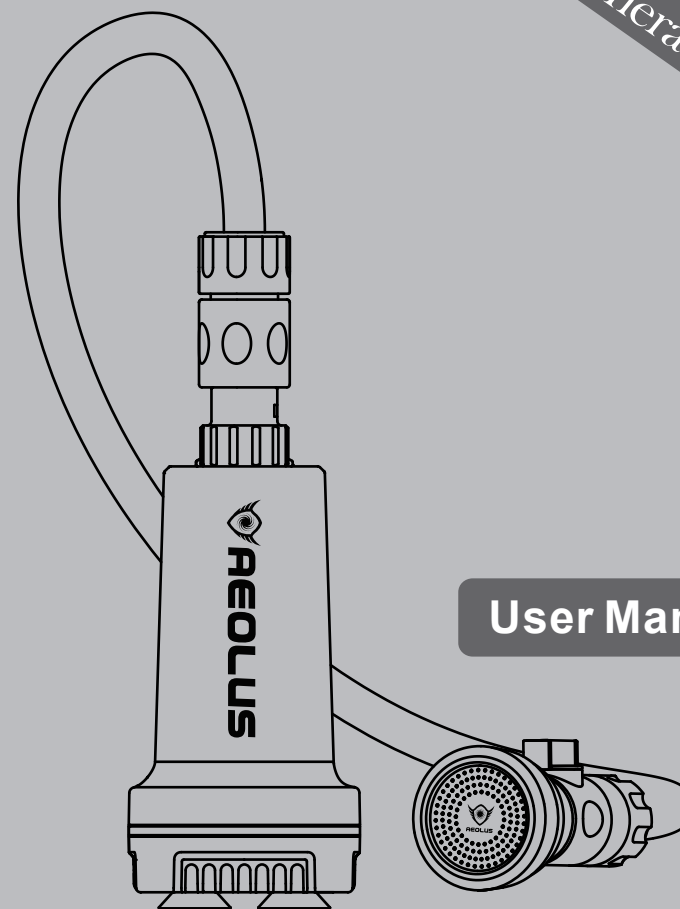


AEOLUS

GroomJet Booster Pump for Rapid and Deep Bathing

GJ-002

New
Generation



Thank you for purchasing our products!

Please read this manual carefully before operation.

IMPORTANT: DO NOT ATTEMPT TO DISASSEMBLE TABLE WITHOUT CONTACTING AEOLUS.

For your safety, please follow the instructions:

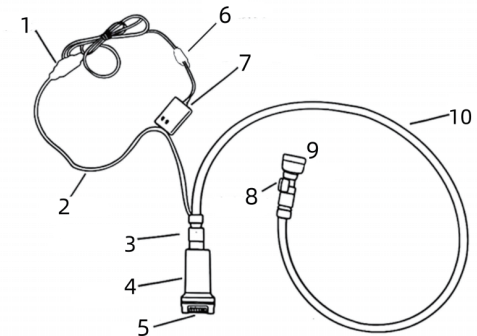
This product is for veterinary use only. We do not condone this product for other uses.

To reduce the risk of injury, the user must read and understand this guide before installation of this product.

ATTENTION: Due to operational testing and quality assurance during the production process, a small amount of water may remain inside the product when the package is opened.

Overview

- 1.Power Switch
- 2.Power Cable
- 3.Automatic Air Vent
- 4.Connector of Water Hose
- 5.Main Unit
- 6.Pump Bottom Shell
- 7.Quick Connector
- 8.Sprayer Adjusting Valve
- 9.Sprayer
- 10.Pressure-resistant Hose

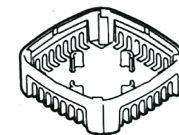


Part List

Main Unit × 1



Pump Bottom Shell × 1



Sprayer × 1, Sprayer Adjusting Valve × 1



Automatic Air Vent × 1



Pressure-Resistant Hose × 1

Filter × 2



User Manual and Warranty Card × 1

Specification

Item No.		GJ-002
Product	GroomJet Booster Pump for Rapid and Deep Bathing	
Working Environment	Temperature	5-55°C
Specification	Diameter of Hose	15mm
	Power Voltage	220V
	Power	60W
Waterproof Performance		IP68
Size	Pump (L×W×H)	80×80×210mm
	Hose (ø×L)	17×1600mm
	Power Cable (Length)	3m
Weight		1.8kg

Warning

⊘ To avoid accelerated wear caused by running the bathing machine without water, please prevent it from operating under dry conditions. When the water level is insufficient, the pet bathing machine should be turned off immediately to avoid dry running.	⊘ The area around the water inlet at the bottom of the bathing machine must be kept free of obstacles, and blocking or partial blocking is strictly prohibited.
⊘ When the outlet is closed, the bathing machine must not run for more than 1 minute.	⚠ Overheating Protection: When the pet bathing machine overheats, the built-in motor thermal protection device will automatically cut off the motor power. After cooling, the motor will automatically restart.
⚠ Mud, sand, and other substances that may cause wear will accelerate the wear of the pet bathing machine, especially under small water volume conditions.	⚠ Rinsing the Bathing Machine: After use, rinse the equipment with clean water until shampoo and other detergents are completely removed.

Package Inspection

The manufacturer is not liable for any damage caused by a third party "Transport or Delivery Company".

The day the unit is delivered, an inspection of the outer packing should be made for any damage to the packing box.

Then the unit should be unpacked carefully; all components, accessories and the table itself should be inspected for any damage or loss.

If any damage is evident, the carrier or dealer should be notified immediately.

Note

1.The GroomJet should avoid running without water, as this will cause accelerated wear. If the water level is insufficient to allow the GroomJet to operate and draw in water, it should be immediately turned off to prevent dry running.

2.When the water outlet is closed, the GroomJet should not operate for more than 1 minute.

3.Sand, mud, and other substances that may cause wear to the GroomJet will accelerate the wear rate, especially with low water flow.

4. There should be no obstacles near the water inlet area at the bottom of the GroomJet, and it is strictly forbidden to cover or partially block it.
5. Heating protection for the GroomJet: When the GroomJet overheats, the built-in motor overheating protection device will automatically cut off the motor's power supply. After cooling, the motor will automatically restart.
6. Cleaning the GroomJet: After use, rinse the pump with clean water until all shampoo or other cleaning agents are completely removed.

Safety Warning

Please read all safety instructions carefully before use to reduce the risk of injury or damage.

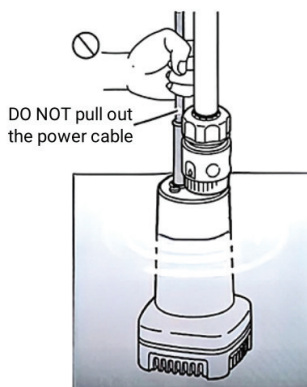
Power Supply and Switch

Danger

1. Do not pull or forcibly disconnect the power cord or switch. Doing so may cause a short circuit, resulting in electric shock, short circuit, or fire.
2. Do not immerse the power adapter or switch directly into liquid, as this may cause product damage or a short circuit in the power cord, leading to the risk of electric shock or fire.
3. Do not use the product if the power cord, power adapter, or switch is damaged or overheated, as this may result in electric shock or fire due to short circuit.
4. If an extension cable is to be used, it must be installed by a professional electrician in accordance with national regulations.

Warning

1. It is strictly prohibited to use plug-in type power cables, in order to prevent the power plug and power cable from being damaged by heat, oil, or sharp edges.
2. Do not use the power cable to fasten or refasten the pet bathing machine.



Other Precautions

Danger

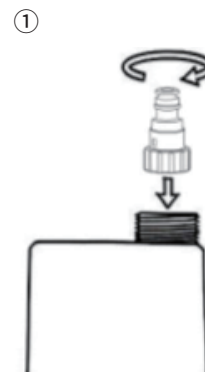
1. Before powering on the product, make sure that the bathing machine has been filled with water and the shower hose is properly secured to prevent damage to the machine from direct startup.
2. The data indicated on the equipment nameplate must be consistent with the technical specifications of the main power supply. Ensure that all electrical connections remain dry.
3. This product must be connected to a reliable grounding system.

Warning

1. This product is intended only for suction of clean water or designated cleaning solutions. It is strictly prohibited to use this product to suction corrosive, flammable, or explosive substances (such as gasoline, diesel, or various nitro-based thinners), fats, or oils. The water temperature must not exceed 45 °C.
2. This product must not be used by individuals with physical, sensory, or mental disabilities, or by persons lacking relevant experience or knowledge (including children), unless they are supervised or instructed by a person responsible for their safety. Failure to comply may result in electric shock or injury.
3. Do not attempt to repair, disassemble, or modify this product by yourself. Otherwise, fire, malfunction, or injury may occur.

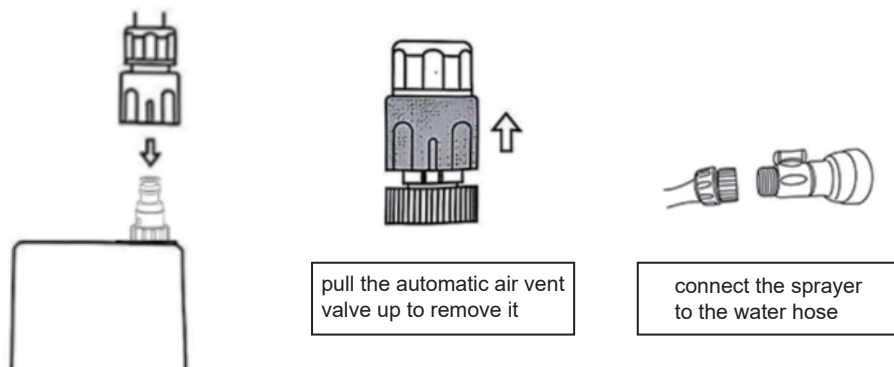
Operation Instructions

1. Connect the automatic air vent valve to the main unit.



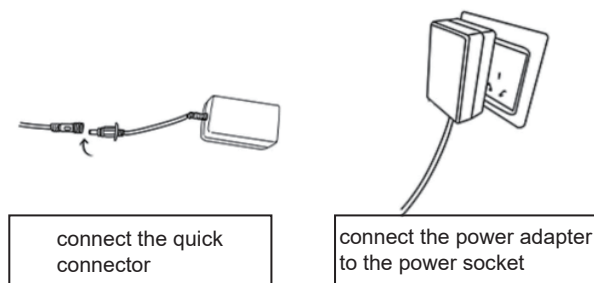
2.Connect the water hose to the automatic air vent valve, and then connect the sprayer to the water hose.

②



3.Connect the power adapter to the main unit using the quick connector.

③



4.Place the product into the pet bathtub and press it down until the suction cups at the bottom firmly attach to the bathtub. Fill with water up to the suction level, and add shampoo or other cleaning products as needed.

5.Lay the water hose flat on a surface level with the bottom shell, switch on the power, and rotate the sprayer valve left or right to adjust the water flow.

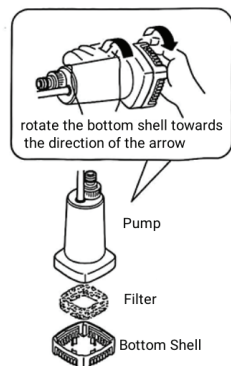
Troubleshooting

Do not disassemble or repair the unit yourself. Please carefully read the “Faults and Possible Causes” on this page before attempting inspection or repair.

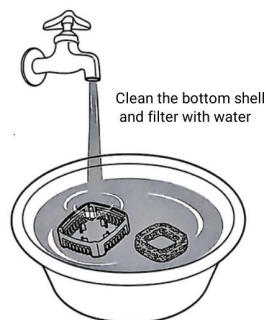
Issues	Possible Causes	Solutions
The pump does not discharge water or discharges slowly	Power cord not plugged in, or the switch is off	Check power connection and switch status
	Water hose is kinked or blocked	Turn off power, open the drain hose, and repair the kink or blockage
	Foreign objects in the filter	Turn off power, open the filter cover, and clean the filter
	Impeller jammed	Turn off power, clean the impeller
	Air is being sucked in	Raise the working water level of the washing machine
	Pressure is too high	Lay the water hose on a flat surface flush with the bottom shell of the pump
Abnormal noise or vibrations during operation	Foreign objects in the pump	Inspect and remove any foreign objects in the pump
	Motor is damaged	Replace with a new motor
During operation, the pump cannot start or suddenly stops	During operation, the pump cannot start or suddenly stops	Turn off power, clean the water inlet and impeller, check if the motor is overheated due to clogged in these areas
	Power supply interrupted	Check power connection

Maintenance

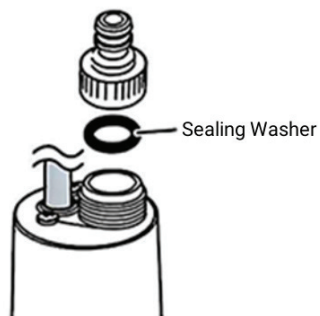
1. Turn off the switch and cut off power.
2. Remove the bottom shell and filter from the pump.



3. Clean the bottom shell and filter.



4. Wipe the filter and bottom shell till they are totally clean and dry.
Make sure to put the sealing washer between the pump and connector.



5. Place the filter and bottom shell on the original place at the pump.

WARNING:

If the parts are broken or worn, please stop operating.

Do not use gasoline, diluted agent, alcohol, and etc. It will lead to discoloration, deformation and cracking.

Warranty

If you need information or if you have a problem, please visit our website at www.aeolus-pet.com or contact our customer care centre in your country.

FULL ONE-YEAR WARRANTY

We warrant each new Aeolus product, model GJ-002 (except filter, water hose), against defects in materials or workmanship for a period of one year from the date of original purchase, and agrees to repair or replace any defective product without charge. A purchase receipt or other proof of date of original purchase will be required before warranty performance is rendered.

IMPORTANT: This warranty does not cover damage resulting from accident, misuse or abuse, lack of reasonable care, the affixing of any attachment not provided with the product or loss of parts or subjecting the product to any but the specified voltage. Parts such as water hoses or filters are also excluded from coverage under this warranty.

WE WILL NOT PAY FOR WARRANTY SERVICE PERFORMED BY A NON-AUTHORIZED REPAIR SERVICE AND WILL NOT REIMBURSE THE CONSUMER FOR DAMAGE RESULTING FROM WARRANTY SERVICE PERFORMED BY A NON-AUTHORIZED REPAIR SERVICE. NO RESPONSIBILITY IS ASSUMED FOR ANY SPECIAL, INCIDENTAL OR NON-CONSEQUENTIAL DAMAGES.

In order to obtain warranty service, simply go to www.aeoluspet.com or call us for assistance.

IF YOU SHIP THE PRODUCT TO A SERVICE CENTRE

Carefully pack and send prepaid, adequately insured and preferably in the original carton. Include details of the defect claimed, and proof of date of original purchase.

It is suggested that for your protection you return shipments of product by insured mail, insurance prepaid. Damage occurring during shipment is not covered by this warranty.

NOTE: No other warranty, written or oral, is authorized by us. This warranty gives you specific legal rights, and you may also have other rights that vary from state to state. Some states do not allow the exclusion or limitation of incidental or consequential damages, so the above exclusion and limitations may not apply to you.

Service Support

Contact us if you cannot solve your problem with this manual.

Dallas

3249 Story Rd. W, Irving, TX 75038, USA.

Tel: +1 469 930 6359

Web: www.aeoluspet.com

Shanghai

Room 403, Building 3, No. 288, Qianfan Road, Songjiang District, Shanghai, China.

Tel: +86-21-67632060, 67632364

Vietnam

19 Nguyen Thong, Hien Nguyen Du Street, Hai Ba Trung, District, Hanoi, Vietnam

Tel: +84 913 238 771

Email: linh.vp@aeoluspet.com

Europe GmbH

August-Borsig-Straß 9, Bergheim, 50126

Tel: +49 172 8844780

Email: aeolus-gmbh@aeoluspet.com